

GS TECH

GS Tech is always providing
the best quality and satisfaction.

GS TECH
KOREA

GS TECH has been creating a new history with **a high technical skills and speedy customer service** in the field of Semiconductor MOLD system since established in 2007.

All of our staffs are trying to do our best with the motto of **“customer is the first”** and consider the relationships between our valuable customer and us as a treasure.

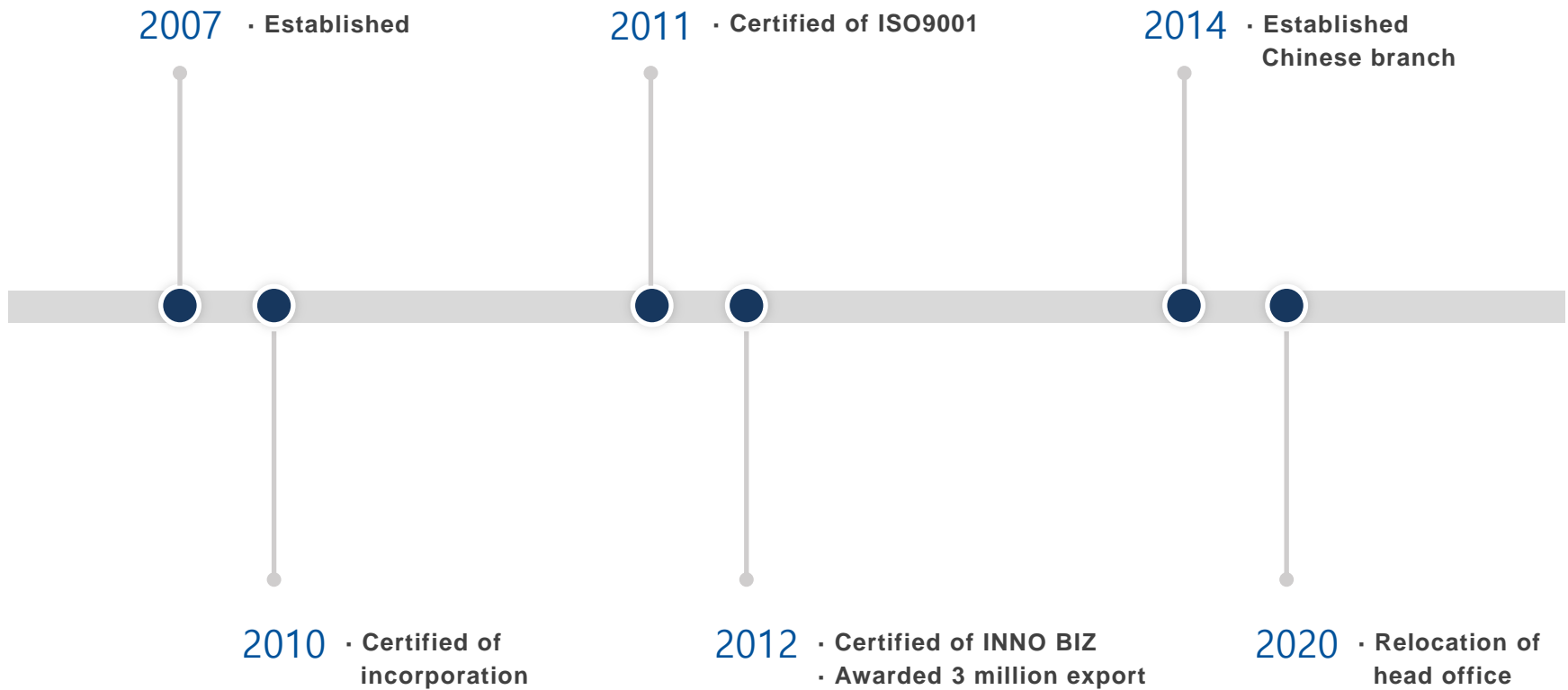


COMPANY INTRODUCTION



Company Name	GS TECH KOREA	Address	Hambangmoe-ro 377Beon-gil, Namdong-gu, Incheon, Korea
Business Type	Semiconductor Mold Die Fabrication	Phone	T : 82-32-811-2218 F : 82-32-811-2219
Sales	8 Million(2019)	Web page	www.gstech.or.kr
CEO	Lee Jae-Yong		

COMPANY HISTORY



CERTIFICATE



ISO 9001



INNO-BIZ



Venture Business



KITA Membership

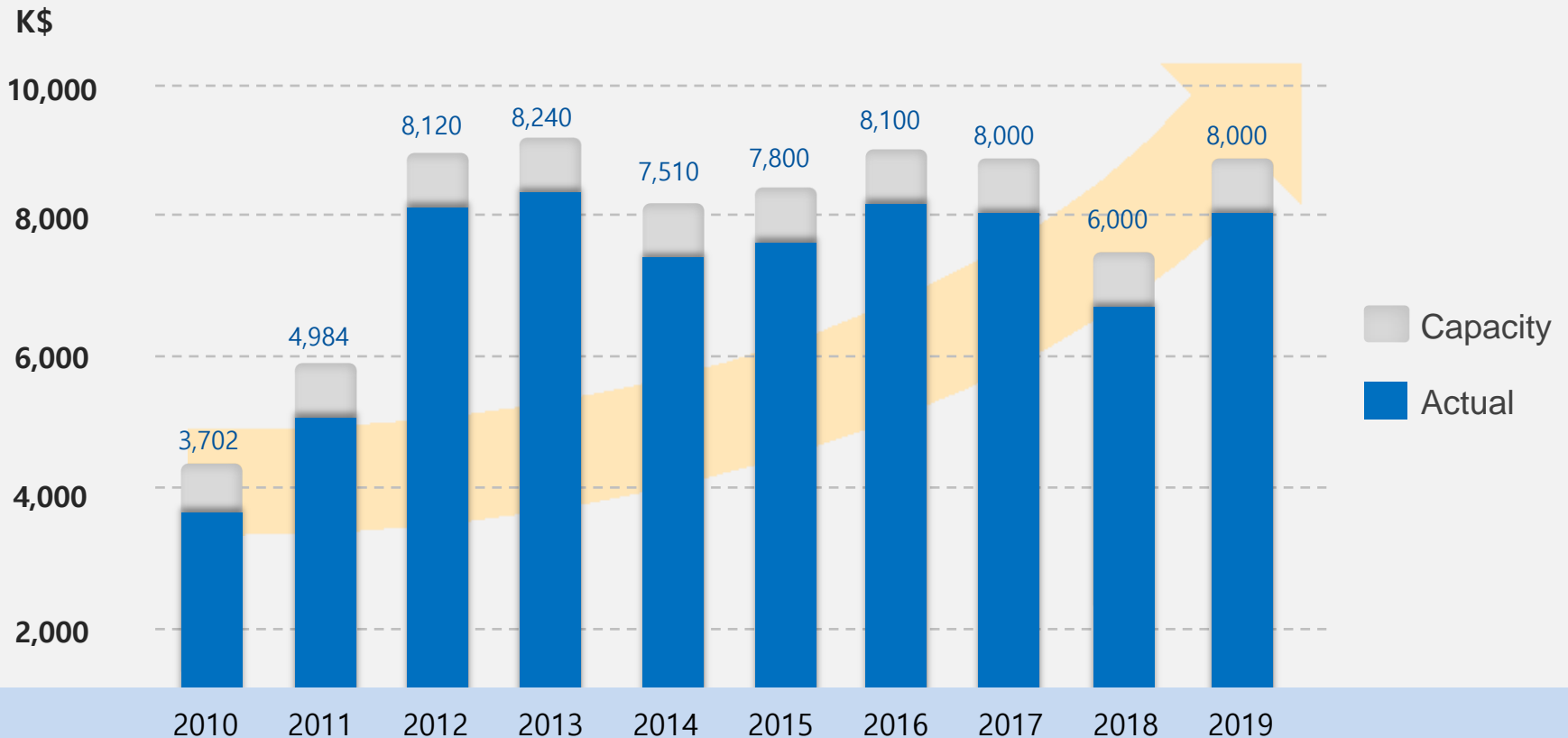


Affiliated Laboratory

ORGANIZATION CHART



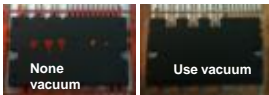
*Continuous Growth with continuous
Technical innovation!!!*



WORLDWIDE CUSTOMERS

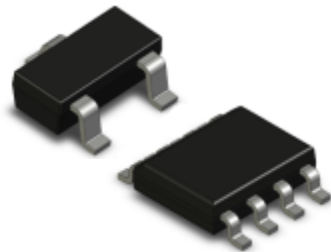


Retract + vacuum mold



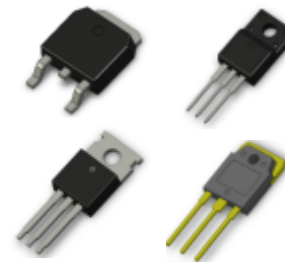
- Apply to Module Package & LED
- Minimum void by vacuum equipment
- Required high quality package
- Shot distance for isolation by retract equipments

M.G.P mold



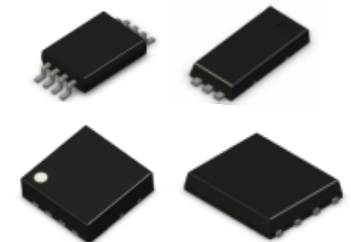
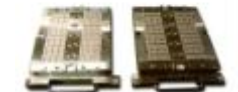
- Apply to small Package like SOT,SC
- Equalize performance with auto mold
- Used to mini tablet emc
- Molding flow Same as auto mold

Semi-M.G.P mold



- Apply to Discrete package (low cost pkg)
- Cost efficient compare conventional mold
- Improve quality by multi pot (2~4 pot)
- need to pre heater m/c

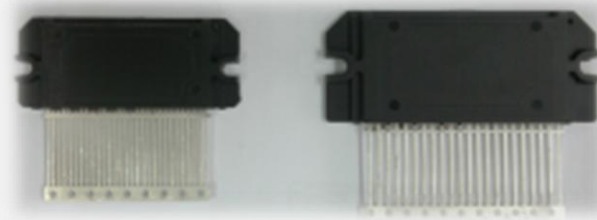
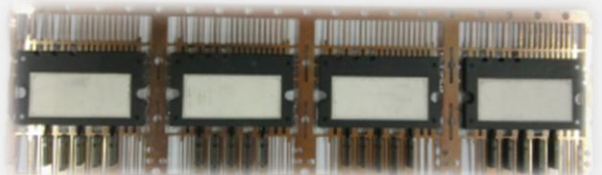
Auto mold & C'kit



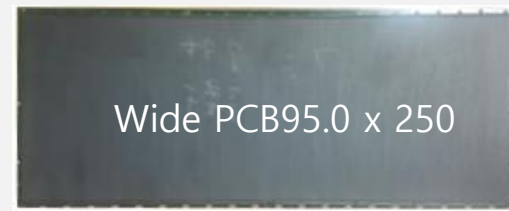
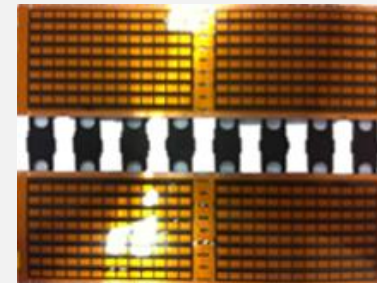
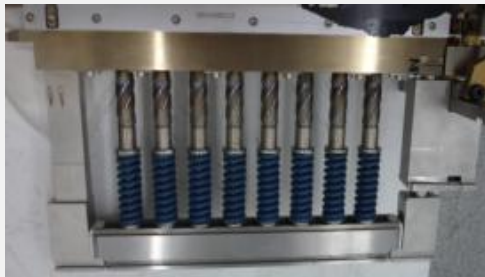
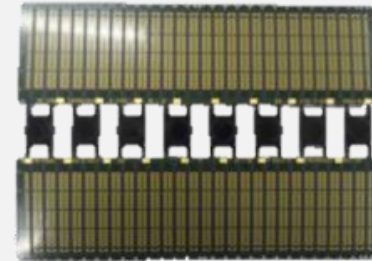
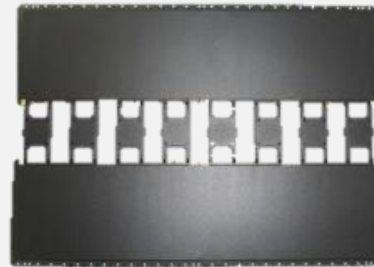
- Convert other device package of Towa, Dai-ichi, Yamada, ASM systems
- Low Cost efficient convert price.

PRODUCT – POWER MODULE

- POWER MODULE PACKAGE.
- ENERGY SAVING, HIGH POWER CONTROL PACKAGE.
- HEAT SINK EXPOSE PACKAGE.

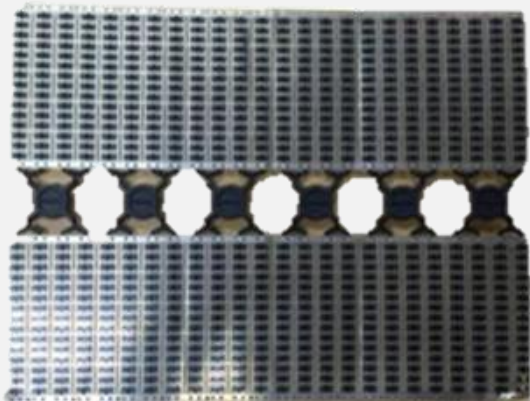
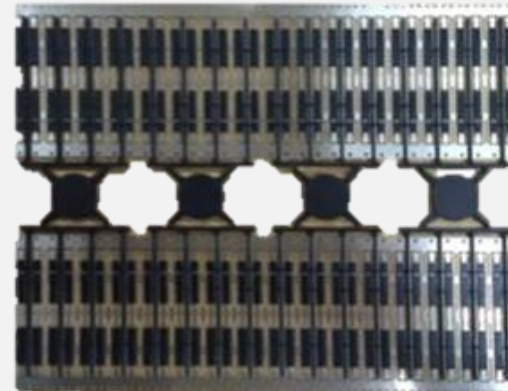
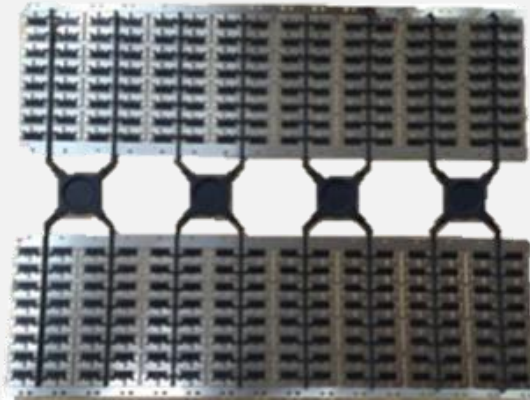


PRODUCT – AUTO MOLD(FBGA)

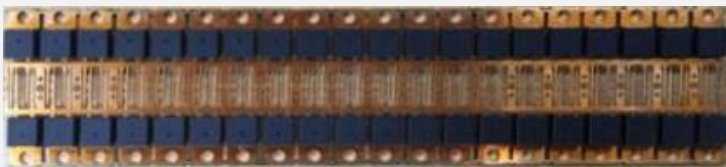
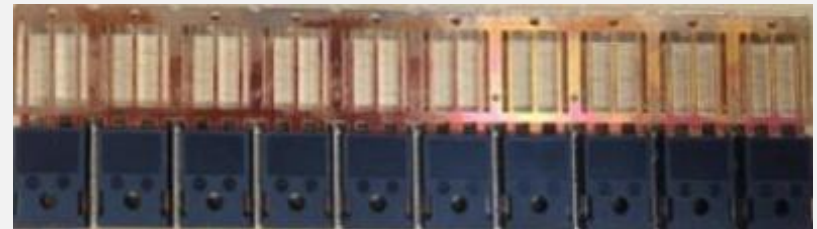
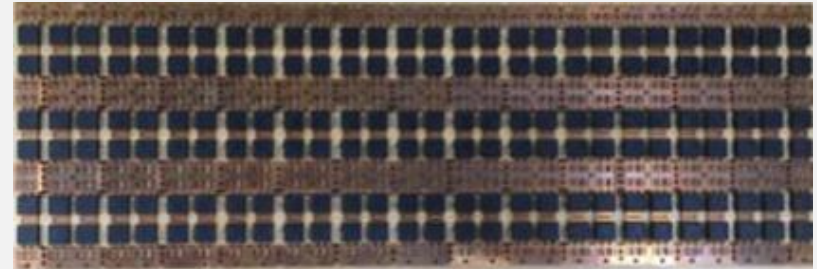
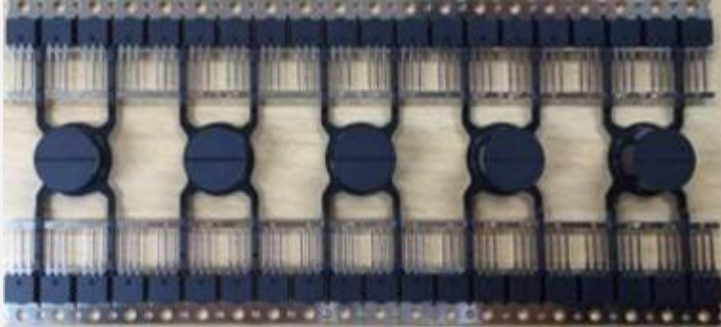


Wide PCB95.0 x 250

PRODUCT – AUTO MOLD(LEAD FRAME)

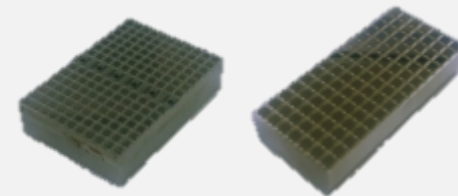
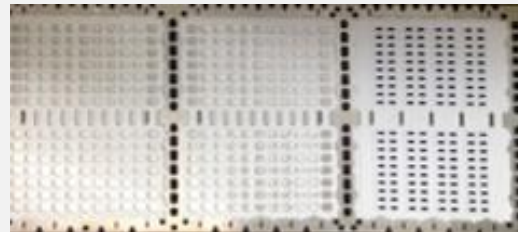
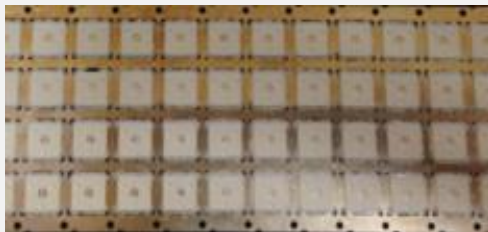


PRODUCT – MANUAL MOLD(Discrete package)



PRODUCT – LED PACKAGE

- WHITE EPOXY MOLD COMPOUND.
- EDM POLISHING SKILL ON CAVITY SURFACE FOR ANTI-STICKING.
- SOLUTION PREVENT CAVITY OXIDANT PROBLEM.



[E.D.M Polishing]



희성소재주식회사

Delivery History

- 3737 ONE CHASE MOLD
- 3030N QCC MOLD 6 CHASE
- KANENA MASTER DIE



Delivery History

- | | | |
|--------------------|--------------------|------------------|
| - SVSC - 402504 | - TVHT - 353504 | - TVSC-601406-MU |
| - TVIT - 5853073 | - TVSC - 3014055 | - TVSC-401406-MU |
| - TVSC - 401406 | - TVSC3030 - 65T | - TVLM-525012 |
| - TVSC - 303006 -N | - TVSC - 303006 -B | - TVSC3623-0.6T |



Delivery History

- 3030 -B QCC MOLD
- TV - 3030 0.65T QCC MGP MOLD
- 3528 - 1.9PI BOOK MOLD



Delivery History

- 4008 QCC MOLD
- 4008 BOOK MOLD
- 3535 WEMC 4CHASE 8 CAVITY SEMI MGP MOLD
- L2L 6CHASE 12CAVITY 1008 Unit SEMI MGP MOLD

PRODUCT - Module package Delivery History



Delivery History

- | | | |
|----------------|---------------|-----------------|
| - Cipos mini | - SIL | - Dragon – mini |
| - Dragon large | - Dragon mini | - MDIP 24-1 |
| - MDIP28-1 | - MIDP34-1 | - 1200V |



Delivery History

- | | | |
|---------|----------|---------|
| - SCM | - FM20 | - SJP |
| - GEN 3 | - SG-C10 | - TM100 |
| - IPM | - SIM40 | |



Delivery History

- SIP-Y2
- SIP-Y68



Delivery History

- IPM
- HIREL



Delivery History

- | | | |
|--------|-------------|----------------|
| - IPM3 | - DFN 6 X 8 | - D2-PAK 7LEAD |
| - IPM5 | - IPMS | |
| - IPM7 | - TOLL | |

PRODUCT - TOWA AUTO MOLD Delivery History



Delivery History

- | | | | |
|------------|------------|------------|-----------------|
| - DTEP-7LD | - DTEP-8W | - DTEP-9LD | - X-1006 & 1008 |
| - PP4010C | - NFP4010A | - LTEP-8LD | - X-1406 & 1407 |
| - B2-PJT | - NA4666 | - NEW J7 | - X-1442 & 1652 |



Delivery History

- MUF MOLD
- QFN 10x10
- QFP 14x14



Delivery History

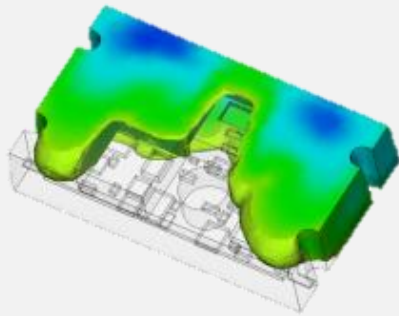
- | | | |
|------------|------------|----------------|
| - MLP50X50 | - SSOP 70 | - TQFP 100-KIT |
| - IPMS | - TSOP2-50 | - WSOP-48 |

STANDARD DELIVERY

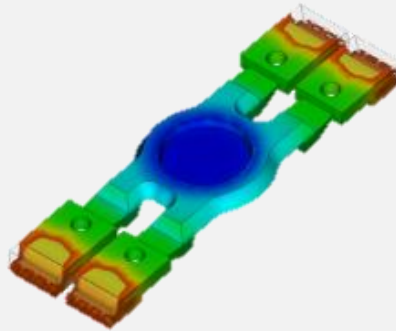
PRODUCT		LEAD TIME
Auto Mold & C-Kit	Lead Frame	3.5 weeks
	Substrate	3.0 weeks
MGP Manual Mold		5.0 weeks
Semi - MGP Manual Mold		5.0 weeks
Conventional Mold		5.0 weeks
LED MGP Manual Mold		6.0 weeks
Mold Spare Parts	Cavity Block	3.0 weeks
	Tip & Pot	3.0 weeks
	Pin	2.5 weeks

MOLD FLOW SIMULATION

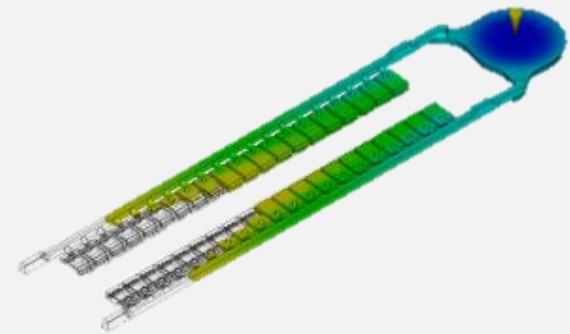
With Autodesk Moldflow Insight (AMI) 2020 Standard License



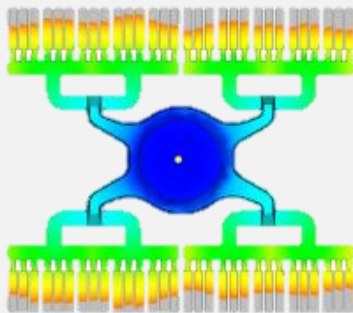
[IPM-3]



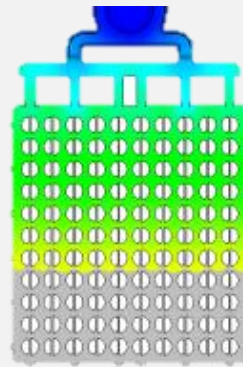
[TO-220 FULL PAK]



[IDF TO-T220 FP]



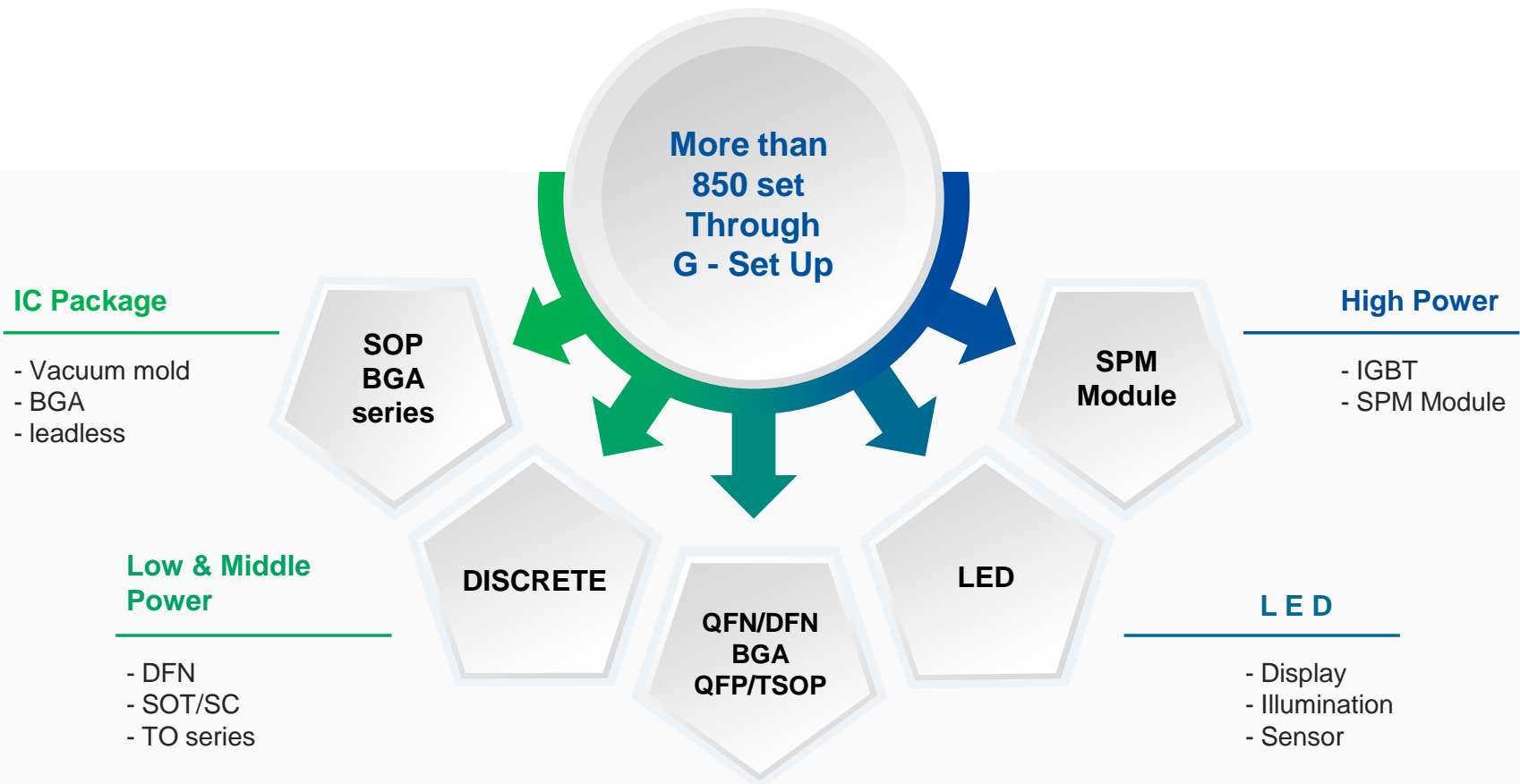
[TANTAL]



[LED (Reflector)]



[BATTERY MODULE]



DEVELOP FLOW PROCESS



Design	<ul style="list-style-type: none">- MANAGE INDEPENDENT R&D CENTER- MOLD & L/F DESIGN PROFESSIONAL- CUSTOMIZED DESIGN
Manufacturing	<ul style="list-style-type: none">- FABRICATION BY ACCURATE MACHINE- ACCURATE QA/ITY TEST
Perfect Set up	<ul style="list-style-type: none">- PROVIDE A SOLUTION BY TECH SUPPORT'S CLOSE COMMUNICATION- ENGINEERS WITH MORE THAN 10 YEARS EXPERIENCE
Service	<ul style="list-style-type: none">- VISIT WITHIN 48 HOURS AFTER PROBLEM OCCURRENCE

MAIN EQUIPMENT

Process	Type	Model	Q'ty	RPM	Transfer Distance(mm)			Maker	Contry of Origin
					X	Y	Z		
Milling	Machining Center	NX5000	1	15,000	900	500	500	Doosan	Korea
		NX6500	1	20,000	1050	650	550	Doosan	Korea
	High-speed Machining Center	IQ-500	1	45,000	600	500	300	Makino	Japan
		IQ-300	2	45,000	400	350	200	Makino	Japan
		V33I	1	30,000	650	450	350	Makino	Japan
		HS430L	1	40,000	420	350	200	Sodick	Japan
	Sawing Machine	YCM-280	1	3450	270	240	-	YCM	Taiwan
Drilling Machine	KM-DM23	1	-	-	-	-	Kyungmin	Korea	
Grinding	Manual Grinding Machine	JFG-520M	3	3600	400	200	320	Jinyoung	Korea
		HCG-630M	1	3,600	400	200	450	Hyunchun	Korea
	Auto Grinding Machine	PSG	1	2,800	600	400	250	Okamoto	Japan
		MEISTERG3	2	5000	400	200	200	Yamada	Japan
E.D.M	E.D.M Machine	AG 40L	5	-	400	300	350	Sodick	Japan
		ROBO RORM 20	1	-	350	250	300	AgieCharmilles	Switzerland
		ROBO RORM 200BO	2	-	350	250	300	AgieCharmilles	Switzerland
		P350	2	-	350	250	300	AgieCharmilles	Switzerland
W/C	Wire Cutting Machine	AG 400L	2	-	400	300	250	Sodick	Japan
		ANL 400G	1	-	400	300	250	Sodick	Japan
		AQ 327L	1	-	370	270	250	Sodick	Japan
Q.C	MICRO HITE	MICRO HITE 600	1	-	-	-	600	TESR	Switzerland
	Depth Gauge	ID-C150XB	3	-	-	-	-	Mitutoyo	Japan
	Projector	hf600	1	-	-	-	-	Starrett	Japan
	Roughness Gauge	SJ-410	1	-	-	-	-	Mitutoyo	Japan
	Non-Contacting Measurement	MF-U	2	-	-	-	-	Mitutoyo	Japan
	Video Meter	VMS-2515A	1	-	-	-	-	Rational	Taiwan
Ass'y	Manual Press Machine	200T T/M PRESS	1	STROKE 300	TABLE SIZE 820 X 940			Fusei Menix	Korea
	Manual Press Machine	260T T/M PRESS	2	STROKE 300	TABLE SIZE 820 X 940			Fusei Menix	Korea

THE WHOLE OF VIEWS OF GS TECH

Outside View



Office



Milling



E.D.M



WIRE CUT



GRINDING



INSPECTION



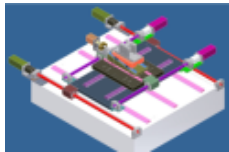
ASSEMBLY



Meeting Room



FABRICATE PROCESS MOLD DIE



1 DESIGN



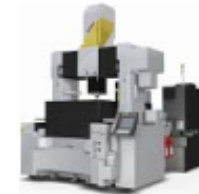
2 MACHINING CENTER (Milling)



3 DESIHEAT TREATMENT



4 GRINDING



5 E.D.M



10 ASSEMBLY & TEST



9 LAZER MARKING



8 PLATING



7 INSPECTION



6 WIRE CUT



Tel : +82 32-811-2218

Fex : +82 32-811-2219

E-mail : ken@gstech.or.kr / steve@gstech.or.kr

(33B 14L) 109, Hambangmoe-ro 377Beon-gil, Namdong-gu, Incheon 21635 Korea